



[Ovatii Shaman Heart](#)  
3/4/2014

[Ovatii Shaman Heart](#)

O...  
1/16/2009



[Tamerlan Beshtau Chrezvichavno Krasiv](#)  
5/22/2005



[RUSCH British Glori Attenboro](#)  
2/23/2000



[RUSCH British Glori Blue Fortune](#)  
6/15/2000



[RUSCH RUSICH Neikid Jevl Ifektra Horja](#)  
11/7/2006



[RUSCH Shou Krokodail Butterfly](#)  
2/25/2002



[Blandora Regal Rebel](#)  
0846CI  
12/17/1996

[Angelorest Mine's Double](#)  
KCR Y 1454402Y02, RKF 0000450  
1/5/1998



[RUSCH Jenifer Jambi Od Zlate Samantv](#)  
1/1/1998



[Razzmatazz Zirconium](#)  
AKC TD 415369,VDH-CER 1003/91  
9/14/1990

[RKFCH RUSCH INTCH\(FCI\) CERCH Keschmir von Shinbashi](#)  
VDH-CER 1384/94, RKF 0000007  
8/19/1994

[Cherrvty Girl von Shinbashi](#)  
VDH-CER 1037/92  
5/21/1992



[Bloomsbury Avocado](#)  
SHSB 433899  
1/1/1999

[RUSCH Vellar Plus Antuanetta](#)  
3/20/1998

[Vellar A Kaprizel](#)  
RKF 0000040  
1/1/1996



[Moonswifit Desert Wind](#)  
KCSB 2854CK  
8/8/1999

[GEOCH RKFCH RUSCH RUSICH INTCH\(FCI\) Moonswifit Bronze Chelstan](#)  
RKF 1620257  
9/1/2003

[Moonswifit My Cherie](#)  
9/11/1996

[Tamerlan Beshtau Miniatura](#)  
9/30/2001

[British Glori Attenboro](#)  
2/23/2000

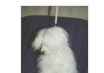
[Tamerlan Beshtau Intriga](#)  
1/2/2000



[Gingery's Blackberry Dynamite](#)  
PKR IX 40590  
10/9/1998

[LUXCH RUSCH Natan Germanika](#)  
PRX IX 40735  
5/7/2000

[Przemek's Bandama v Gingery](#)  
PKRIX36755  
9/4/1994



[Proud Pony Charger](#)  
RKF000264  
2/6/1998

[RUSCH Tamerlan Beshtau Imperiva](#)  
1044383  
1/2/2000

[Vellar Plus Ay Kristin](#)  
2/18/1998

O.  
1/16/2009



Tamerlan Beshtau Chrezvichayno Krasiv  
5/22/2005



RUSCH British Glori Attenboro  
2/23/2000



RUSCH British Glori Blue Fortune  
6/15/2000



RUSCH RUSICH Neikid Jevil Ifektra Horrig  
11/7/2006



RUSCH Shou Krokodail Butterfly  
2/25/2002



Blandora Regal Rebel  
0846CJ  
12/17/1996

Angelcrest Mine's Double  
KCR Y 1454402Y02, RKF 0000450  
1/5/1998



RUSCH Jenifer Jambi Od Zlate Samanty  
1/1/1998



Razzmatazz Zirconium  
AKC TD 415369,VDH-CER 1003/91  
9/14/1990

RKFCH RUSCH INTCH(FCD,CERCH Keschlar von Shinbashi  
VDH-CER 1384/94, RKF 0000007  
8/19/1994

Cherrytv Girl von Shinbashi  
VDH-CER 1037/92  
5/21/1992



Bloomsbury Avocado  
SHSB 433899  
1/1/1999

RUSCH Vellar Pjus Antuanetta  
3/20/1998

Vellar A Kaprizel  
RKF 0000040  
1/1/1996



Moonswif Desert Wind  
KCSB 2854CK  
8/8/1999

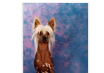
GEOCH RKFCH RUSCH RUSJCH INTCH(FCD) Moonswif Bronze Chelban  
RKF 1620257  
9/1/2003

Moonswif My Cherie  
9/11/1996

Tamerlan Beshtau Miniatura  
9/30/2001

British Glori Attenboro  
2/23/2000

Tamerlan Beshtau Intriga  
1/2/2000



Gingerv's Blackberry Dynomite  
PKR IX 40590  
10/9/1998

LUXCH RUSCH Natan Germanika  
PRX IX 40735  
5/7/2000

Przemek's Bandama v Gingery  
PKRIX36755  
9/4/1994



Proud Pony Charger  
RKF000264  
2/6/1998

RUSCH Tamerlan Beshtau Imperiva  
1044383  
1/2/2000

Vellar Pjus Ay Kristin  
2/18/1998