



[Ovafii...](#)
3/27/2014

[Ovafii...](#)

O...
1/16/2009



Tamerlan Beshtau Chrezvichavno Krasiv
5/22/2005



RUSCH British Glori Attenboro
2/23/2000



RUSCH British Glori Blue Fortune
6/15/2000



RUSCH RUSICH Neikid Jevl Ifektra Horja
11/7/2006



RUSCH Shou Krokodail Butterfly
2/25/2002



Blandora Regal Rebel
0846CI
12/17/1996

Angelorest Mine's Double
KCR Y 1454402Y02, RKF 0000450
1/5/1998



RUSCH Jenifer Jambi Od Zlate Samantv
1/1/1998



Razzmatazz Zirconium
AKC TD 415369,VDH-CER 1003/91
9/14/1990

RKFCH RUSCH INTCH(FCI) CERCH Keschmir von Shinbashi
VDH-CER 1384/94, RKF 0000007
8/19/1994

Cherrvrv Girl von Shinbashi
VDH-CER 1037/92
5/21/1992



Bloomsburv Avocado
SHSB 433899
1/1/1999

RUSCH Vellar Pljus Antuanetta
3/20/1998

Vellar A Kaprizel
RKF 0000040
1/1/1996



Moonswifv Desert Wind
KCSB 2854CK
8/8/1999

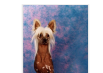
GEOCH RKFCH RUSCH RUSICH INTCH(FCI) Moonswifv Bronze Chelstan
RKF 1620257
9/1/2003

Moonswifv My Cheric
9/11/1996

Tamerlan Beshtau Miniatura
9/30/2001

British Glori Attenboro
2/23/2000

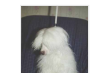
Tamerlan Beshtau Intriga
1/2/2000



Gingery's Blackberry Dynamite
PKR IX 40590
10/9/1998

LUXCH RUSCH Natan Germanika
PRX IX 40735
5/7/2000

Przemek's Bandama v Gingery
PKRIX36755
9/4/1994



Proud Pony Charger
RKF000264
2/6/1998

RUSCH Tamerlan Beshtau Imperiva
1044383
1/2/2000

Vellar Pljus Ay Kristin
2/18/1998

O...
1/16/2009



[Tamerlan Beshtau Chrezvichayno Krasiv](#)
5/22/2005



[RUSCH RUSICH Neikid Jevil Ifektra Horrig](#)
11/7/2006



[RUSCH British Glori Attenboro](#)
2/23/2000



[RUSCH British Glori Blue Fortune](#)
6/15/2000



[RUSCH Shou Krokodail Butterfly](#)
2/25/2002



[Blandora Regal Rebel](#)
0846CI
12/17/1996

[Angelcrest Mine's Double](#)
KCR Y 1454402Y02, RKF 0000450
1/5/1998



[RUSCH Jenifer Jambi Od Zlate Samanty](#)
1/1/1998



[Razzmatazz Zirconium](#)
AKC TD 415369,VDH-CER 1003/91
9/14/1990

[RKFCR RUSCH INTCH\(FCD,CERCH Keschlar von Shinbashi](#)
VDH-CER 1384/94, RKF 0000007
8/19/1994

[Cherrytv Girl von Shinbashi](#)
VDH-CER 1037/92
5/21/1992



[RUSCH Vellar Pjus Antuanetta](#)
3/20/1998

[Bloomsbury Avocado](#)
SHSB 433899
1/1/1999

[Vellar A Kaprizel](#)
RKF 0000040
1/1/1996



[GEOCH RKFCR RUSCH RUSJCH INTCH\(FCD\) Moonswif Bronze Chelban](#)
RKF 1620257
9/1/2003

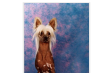
[Moonswif Desert Wind](#)
KCSB 2854CK
8/8/1999

[Moonswif My Cherie](#)
9/11/1996

[Tamerlan Beshtau Miniatura](#)
9/30/2001

[British Glori Attenboro](#)
2/23/2000

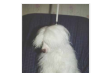
[Tamerlan Beshtau Intriga](#)
1/2/2000



[LUXCH RUSCH Natan Germanika](#)
PRX IX 40735
5/7/2000

[Gingery's Blackberry Dynomite](#)
PKR IX 40590
10/9/1998

[Przemek's Bandama v Gingery](#)
PKRIX36755
9/4/1994



[RUSCH Tamerlan Beshtau Imperiva](#)
1044383
1/2/2000

[Proud Pony Charger](#)
RKF000264
2/6/1998

[Vellar Pjus Ay Kristin](#)
2/18/1998